

TIME  
LIDE

ZAMBIA  
MADAGASCAR

TIME  
LIDE





A remote island sanctuary .....  
somewhere between a fairytale and a dream





# REGIONAL KEY HIGHLIGHTS

*A rare escape to the ends of the Earth, in the middle of the Indian Ocean*

## REGION HIGHLIGHTS

1. Huge variety of activities
2. Exclusive private island
3. Ultimate luxury; remote + accessible



*“Dalais...saw an opportunity to create an island property with a level of luxury Madagascar had never known. The idea for Miavana by Time + Tide was born.”*

WALL STREET JOURNAL



# ACCESS

INTERNATIONAL ARRIVAL

+ NOSY BE

+ DIEGO SUAREZ

DOMESTIC FLIGHT

+ PRIVATE HELICOPTERS

+ ROBINSON 66





The boat fishing season runs from October to April, offering trolling, popping, jigging, bottom and deep sea excursions.



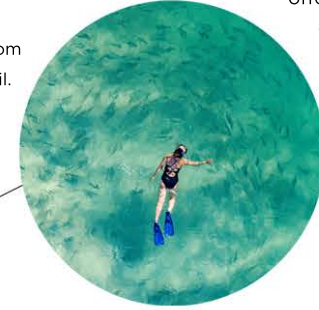
May to October is the best time for windsurfing and kitesurfing.



Helicopter excursions to nearby national parks are excellent all year.



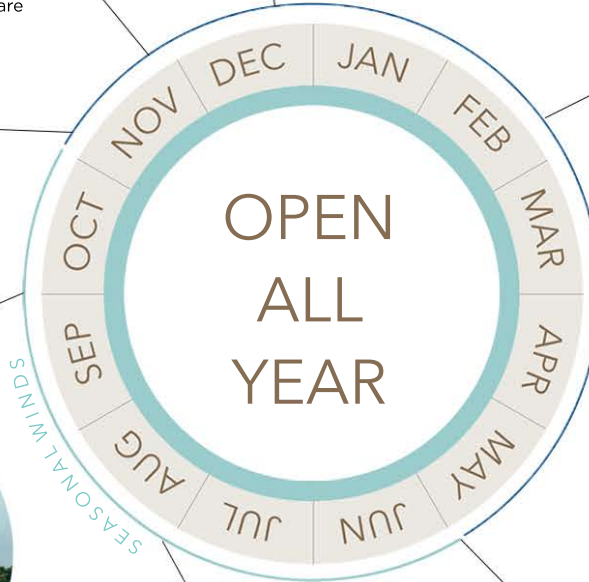
Sea turtles begin nesting on Nosy Ankaao in December, with hatching season continuing through March.



Snorkelling and diving are best from November to April.



Seek out native wildlife on guided nature walks all the year on Nosy Ankaao



The humpback whale migration runs July to October.



Thousands of terns land on Nosy Manamphao for the nesting season

# GREAT ALL YEAR

- + Helicopter excursions to nearby national parks
- + Lemur trekking and guided nature walks
- + Wildlife experiences - every season offers something new and exciting
- + Snorkelling on our house reef

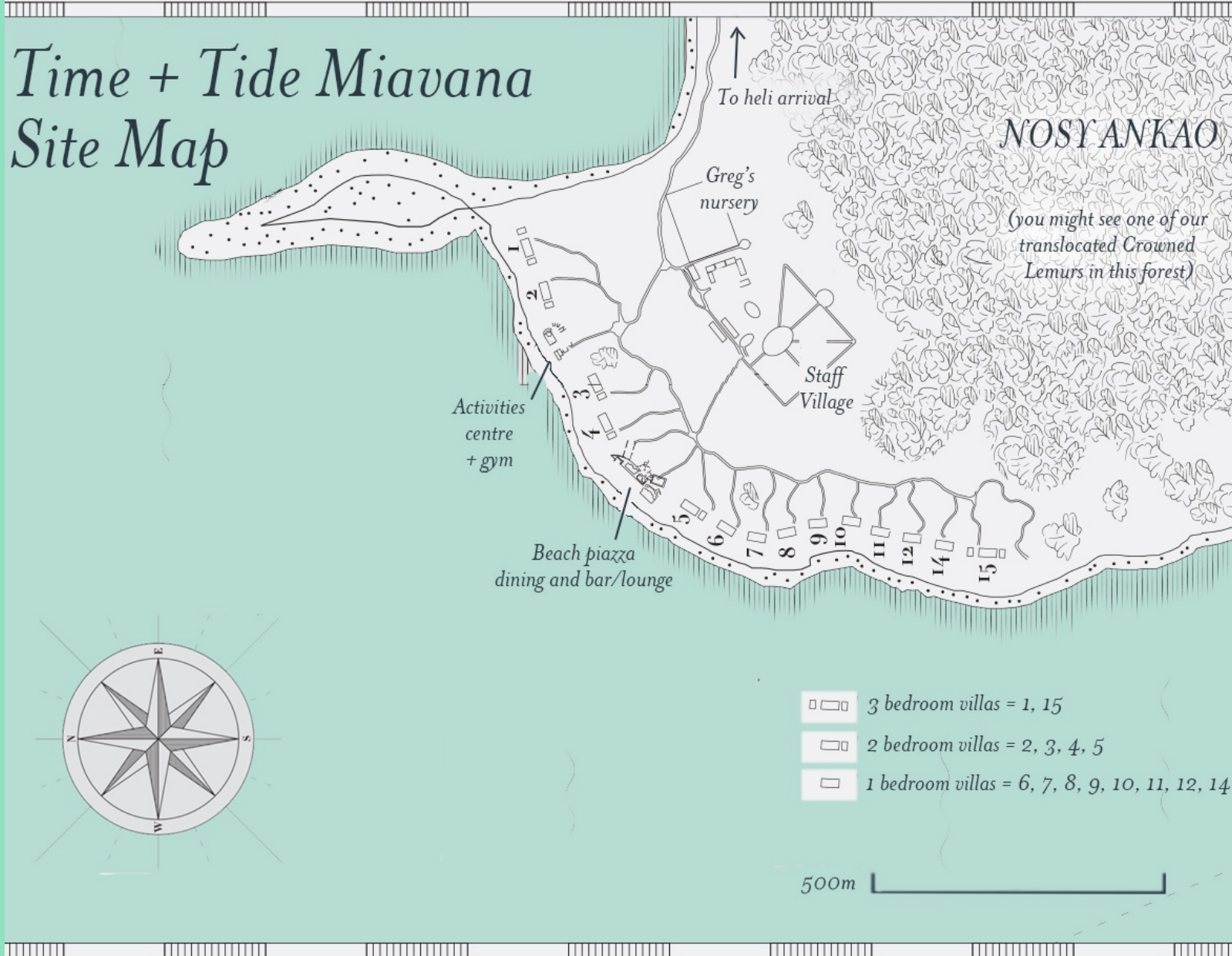
# TIME + TIDE MIAVANA

NOSY ANKAO, MADAGASCAR

THE  
ULTIMATE  
EXPERIENCE  
FOR THE  
MODERN DAY  
EXPLORER



# Time + Tide Miavana Site Map



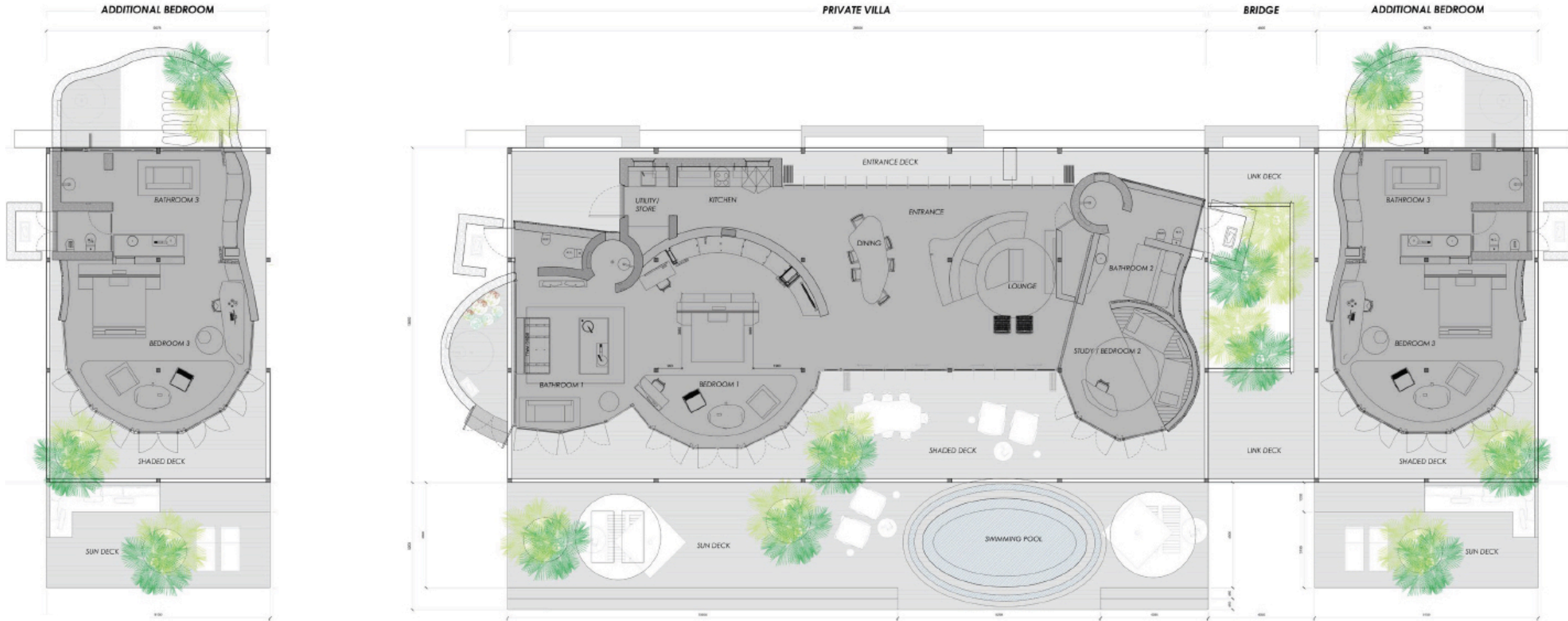
## VILLAS

- + 14 VILLAS
- + 1, 2 & 3 BEDROOMS
- + MINIMUM SIZE = 450sqm
- + PRIVATE POOLS
- + BUTLER SERVICE
- + KITCHENETTE
- + DIRECT BEACH ACCESS

# 3 bedroom villa



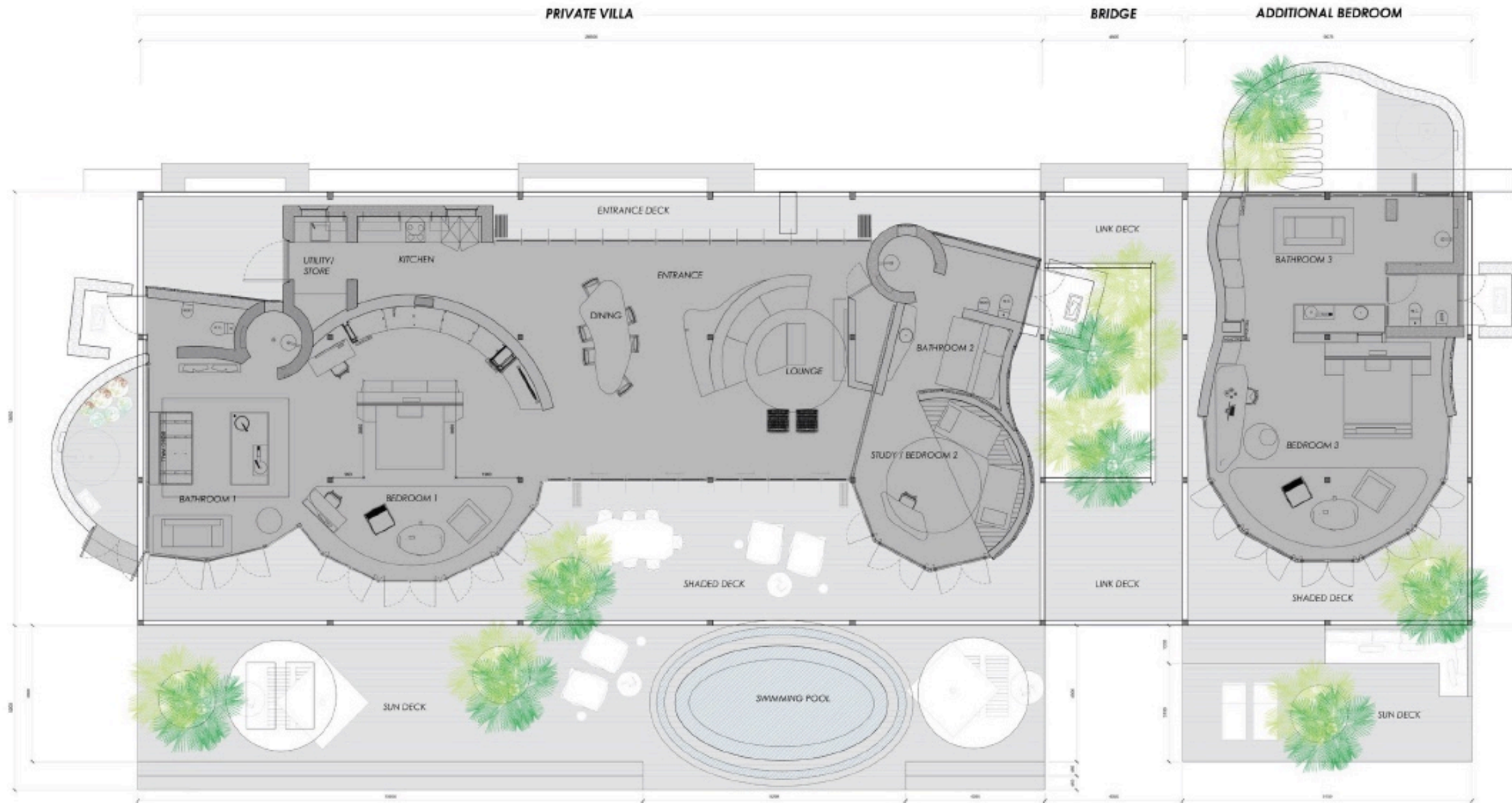
# Three-bed Villa



# 2 bedroom villa



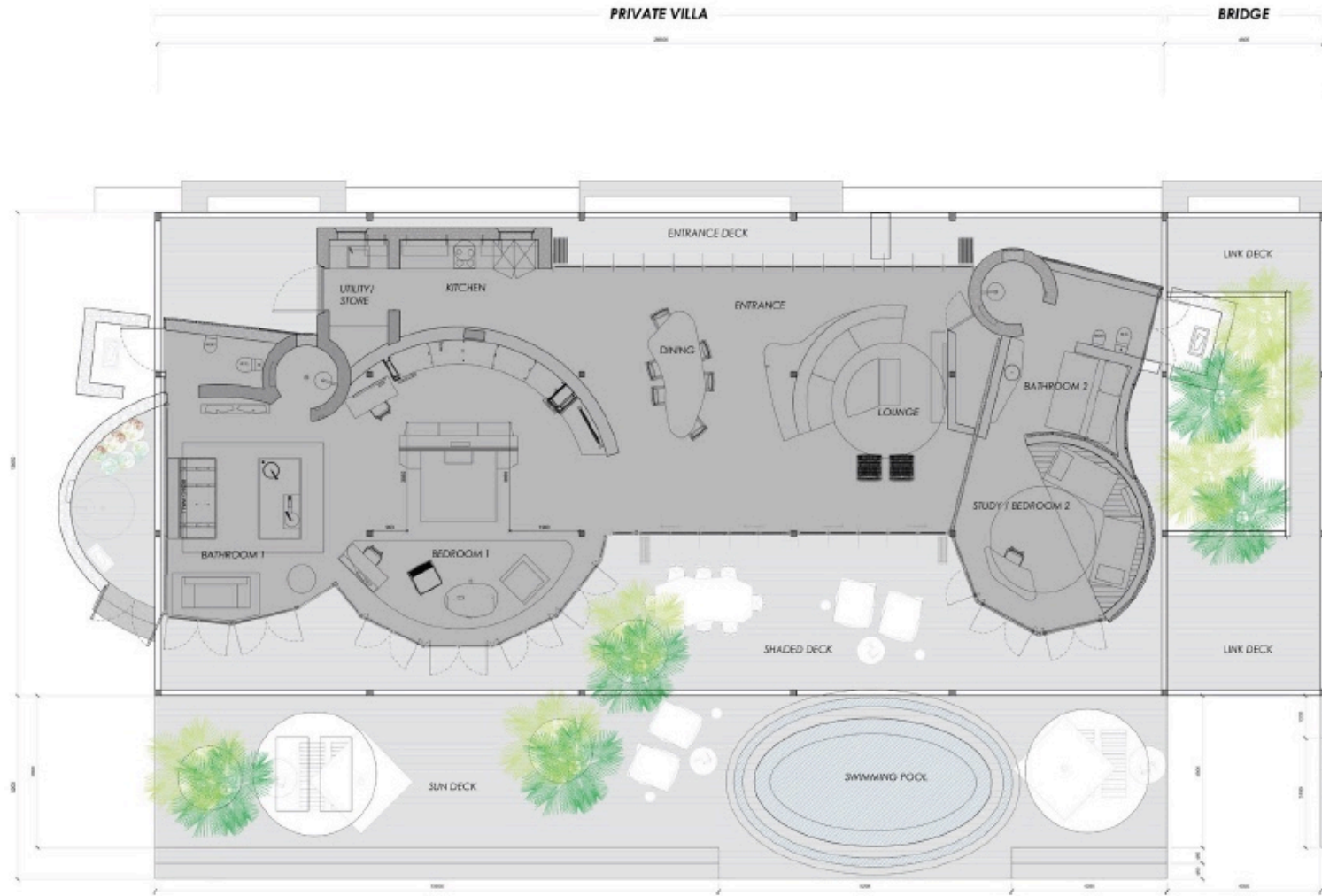
# Two-bed Villa



# 1 bedroom villa



# One-bed Villa











## TIME + TIDE MIAVANA

- + Villas with en-suite bathrooms
  - + 8 x One-bedroom en-suite villas
  - + 4 x Two-bedroom en-suite villas
  - + 2 x Three-bedroom en-suite villas
- + Opening dates: All year round
- + Transfer time:
  - + 1 hour Heli transfer Nosy Be
  - + 30 mins Diego Suarez
- + Wifi / connection







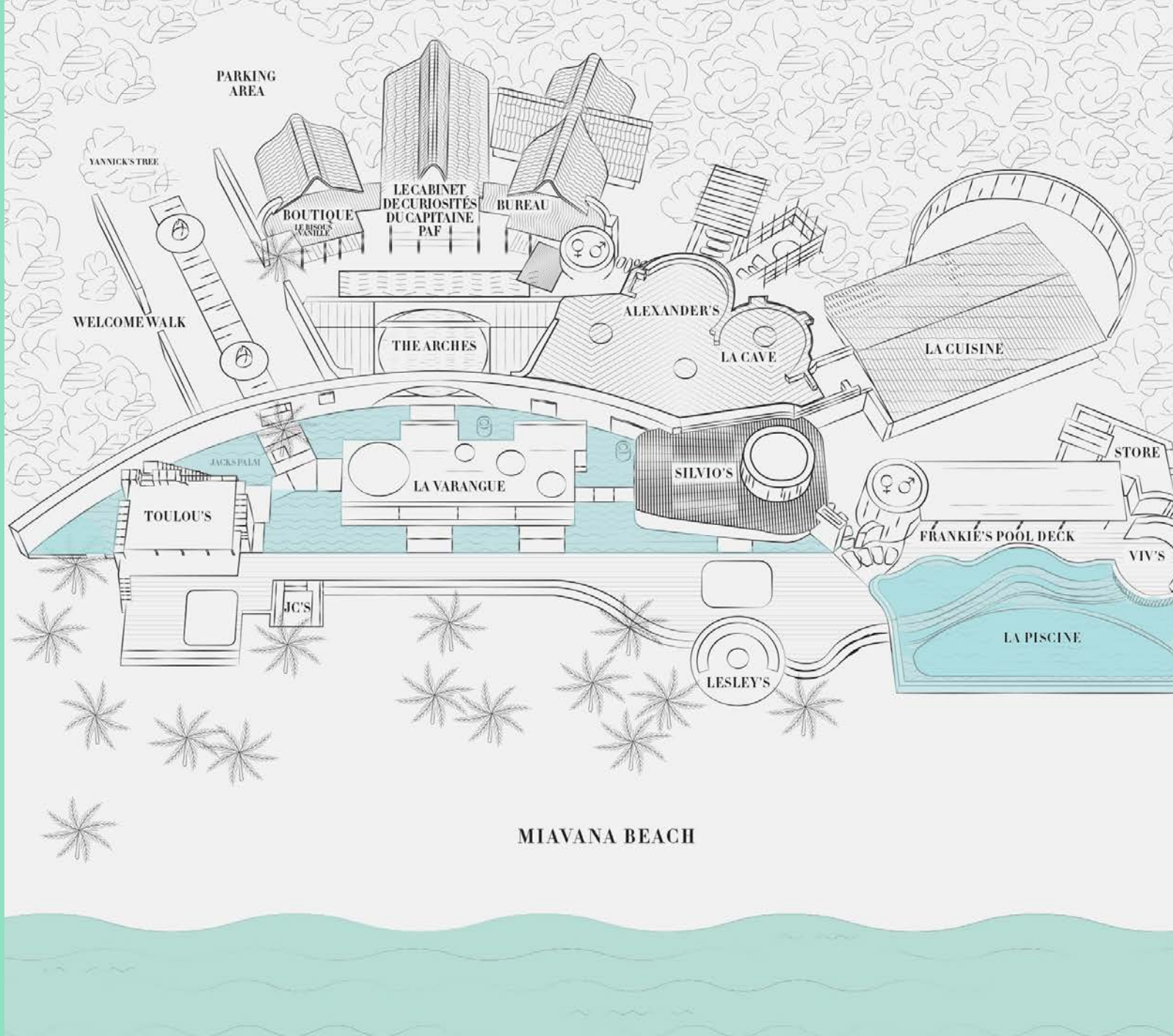
# MAIN PIAZZA

- + PRIVATE SPACES
- + DANCE FLOORS
- + INFINITY POOL

TIME + TIDE MIAVANA, MADAGASCAR



TIME  
TIDE



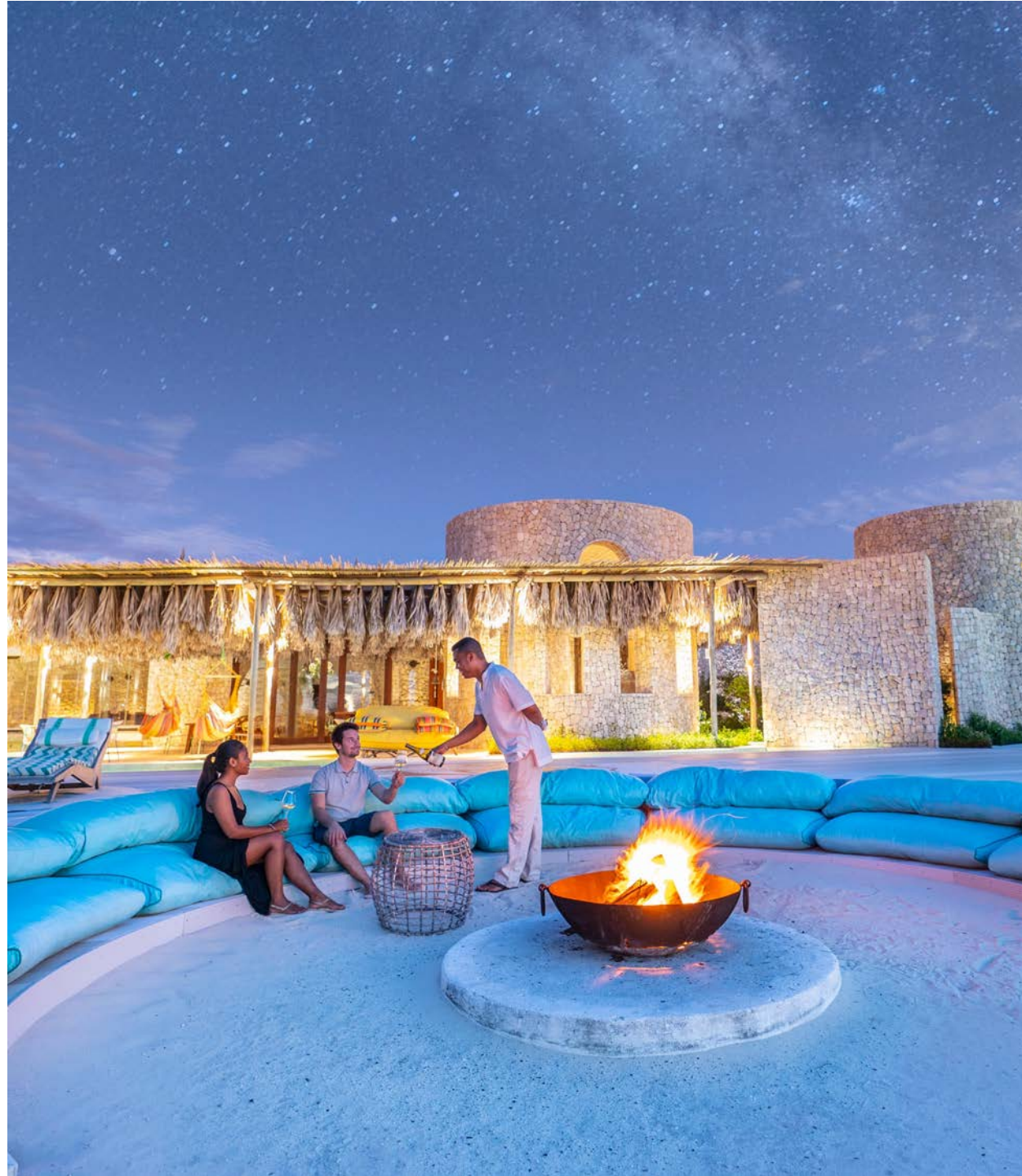
# MAIN PIAZZA

- + WINE CELLAR
- + ROOFTOP BAR
- + INDOOR/OUTDOOR DINING
- + NATURAL HISTORY MUSEUM













# ACTIVITIES + WILDLIFE

- + Helicopter excursions
- + Guided nature walks - Lemurs
- + Quad-biking
- + Scuba diving / snorkelling
- + Water skiing
- + Paddle Boarding
- + Paddling/Surfski
- + Kite Surfing
- + Fishing
- + Boat trips
- + Gym
- + Spa



Golden Crown  
Lemur

TIME  
TIDE

ZAMBIA  
MADAGASCAR







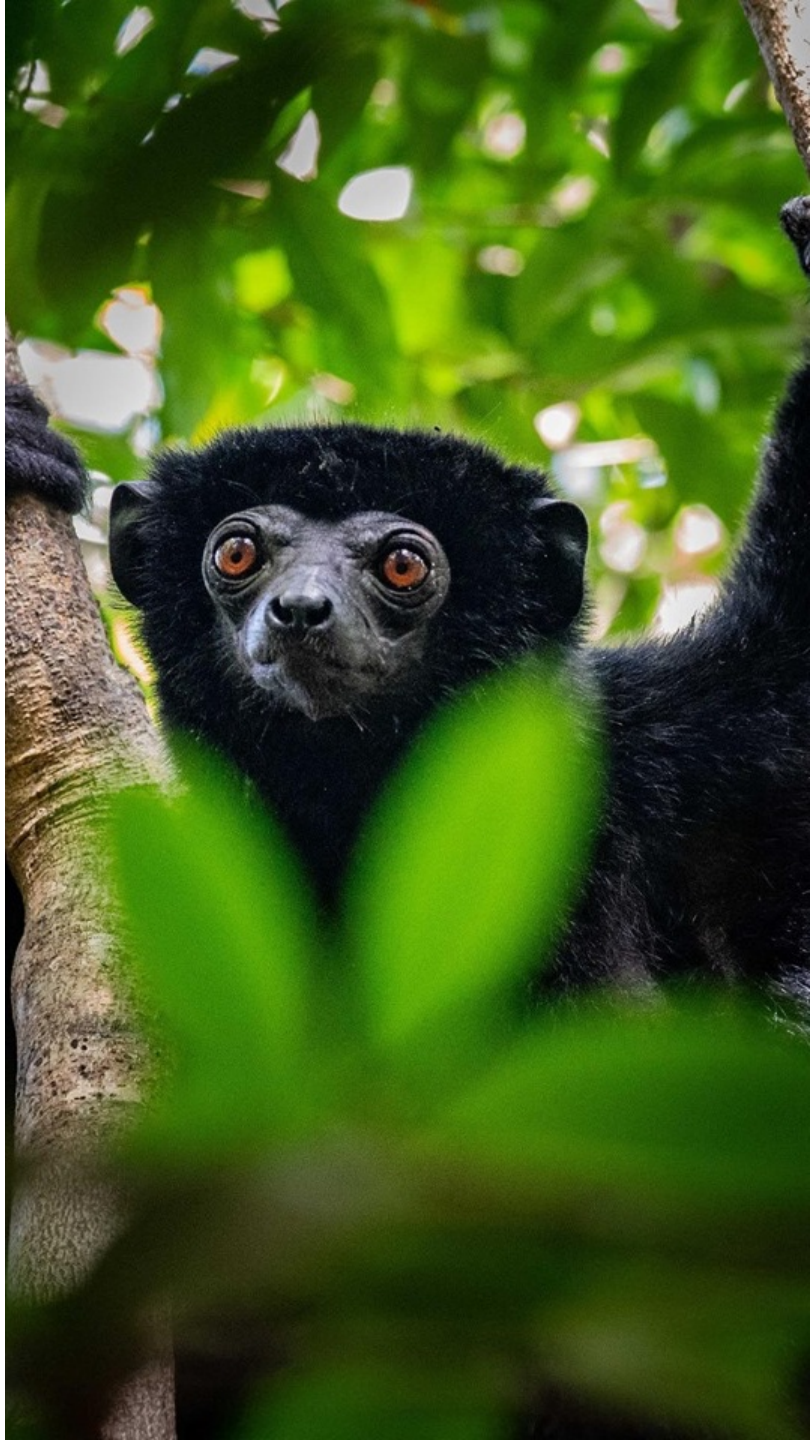






# MAGIC MOMENTS

- + Exclusive beach picnic on an uninhabited private island
- + Helicopter adventures to the Madagascan mainland for different lemurs, Tsingy and limestone caves
- + Guided trek to see the island's Crowned Lemurs and conservation projects
- + A guided tour of the Cabinet de Curiosities – a collection of rare Madagascan artefacts
- + Take a tour of the local villages to learn about our Foundation's work with the local community to improve healthcare





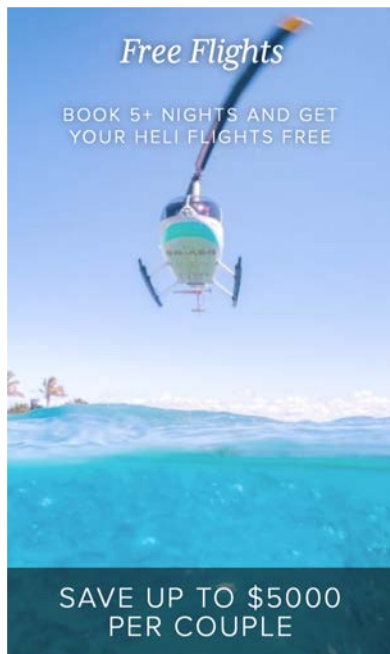
“The pioneer of a new type of indulgent but adventurous beach break”

~ The Financial Times

# RATES + PROMOTIONS



# RATES + PROMOTIONS



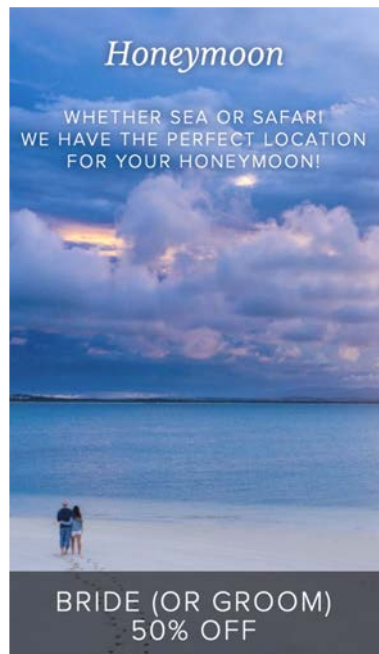
*Free Flights*  
BOOK 5+ NIGHTS AND GET YOUR HELI FLIGHTS FREE

SAVE UP TO \$5000 PER COUPLE



*Stay Pay*  
STAY 7 NIGHTS, PAY FOR 6 PLUS FREE HELI FLIGHTS

SAVE UP TO \$5400 PER PERSON  
(CONSERVATION LEVIES ARE PAYABLE ON THE FREE NIGHT)



*Honeymoon*  
WHETHER SEA OR SAFARI WE HAVE THE PERFECT LOCATION FOR YOUR HONEYMOON!

BRIDE (OR GROOM) 50% OFF



*Kids Stay Free*  
KIDS UNDER 14 STAY FREE  
KIDS 14 - 17 PAY 50%

FREE + DISCOUNTED RATES APPLY WHEN SHARING WITH MIN. NUMBER OF ADULTS PER VILLA. CONSERVATION LEVIES PAYABLE



*JetSet Safari*  
*From the savannah to the sea, join us for a 10+ night ultimate luxury African experience*

+5 NIGHTS ON A BLUE SAFARI AT MIAVANA BY TIME + TIDE, MADAGASCAR  
+5 NIGHTS ON SAFARI IN ZAMBIA

GET 2 NIGHTS FREE  
(1 IN EACH COUNTRY - LOWEST PRICED)  
CONSERVATION LEVIES APPLY  
HELI TRANSFERS ARE CHARGEABLE

# EXCLUSIVE ISLAND PRIVATE HIRE

RATES + PROMOTIONS



MIAVANA  
BY TIME + TIDE

*Island Buyout*

7 NIGHT PRIVATE HIRE  
FOR UP TO 40 PEOPLE

EXCLUDES:  
HELI FLIGHTS & EXCURSIONS  
SPA TREATMENT  
PREMIUM DRINKS

From \$10,000  
per person



## JETSET SAFARI

### Zambia + Madagascar

- + 10 Nights
- + 5 Nights Madagascar, 5 Nights Zambia
- + 2 free nights
- + Free helicopter transfers in Madagascar



# Thank you!

“We travel not to escape life, but for life not to escape us.”







# TIME + TIDE

We have been in  
the happy  
business for  
decades

TIME  
LIDE

ZAMBIA  
MADAGASCAR



# ZAMBIA

For decades we have been guides and guardians and the pioneers of conservation based tourism



# MAPS

MADAGASCAR

+ TIME + TIDE MIAVANA

ZAMBIA

+ SOUTH LUANGWA

+ LOWER ZAMBEZI

+ LIUWA PLAIN

TIME  
LIDE



# ACCESS

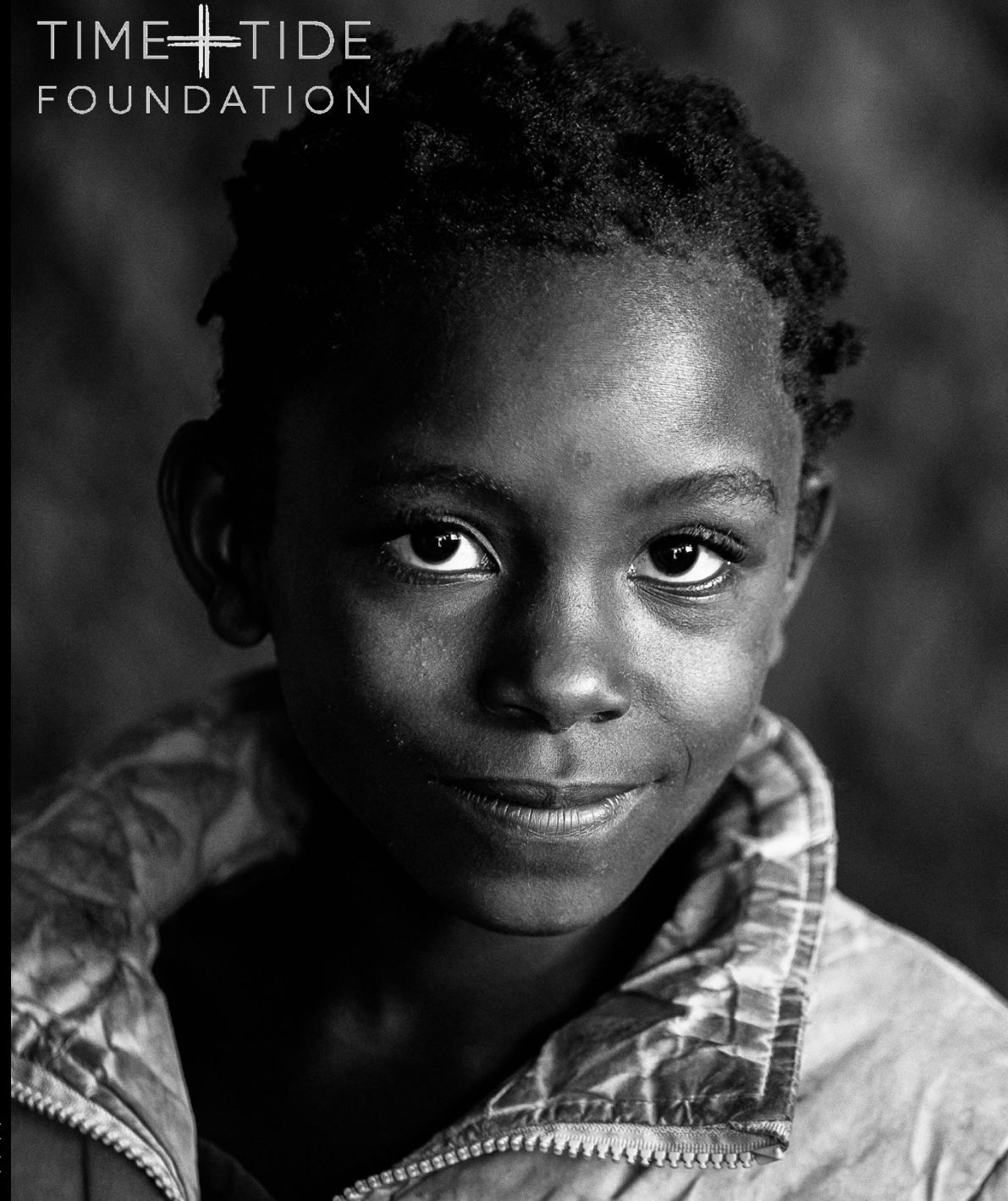
- + Emirates (Dubai)
- + Airlink (Jburg)
- + RwandAir (Kigali)
- + Kenyan (Cape Town + Nairobi)
- + Ethiopian (Addis)
- + Private Jet (to Mfuwe/  
Lusaka/Livingstone)



# OUR CAMPS

1. TIME + TIDE CHINZOMBO
2. TIME + TIDE MCHENJA
3. TIME + TIDE KAKULI
4. TIME + TIDE NSOLO
5. TIME + TIDE LUWI





# OUR IMPACT

These areas are for everyone and no one; to conserve them is our duty as humankind

~ Thierry Dalais, Founder and Chairman

We contribute around \$1 million USD annually to local community and conservation efforts



# LIUWA PLAIN

*A kingdom where space is  
endless  
and time stands still*





# REGIONAL KEY HIGHLIGHTS

Vast skies that meet with a watery wonderland

## REGION HIGHLIGHTS

1. Huge variety of activities (boating, fishing, canoeing, walking + driving safaris) No crocodile's or hippos
2. Only permanent lodge in Liuwa Plain
3. Zambia's largest wildebeest movement

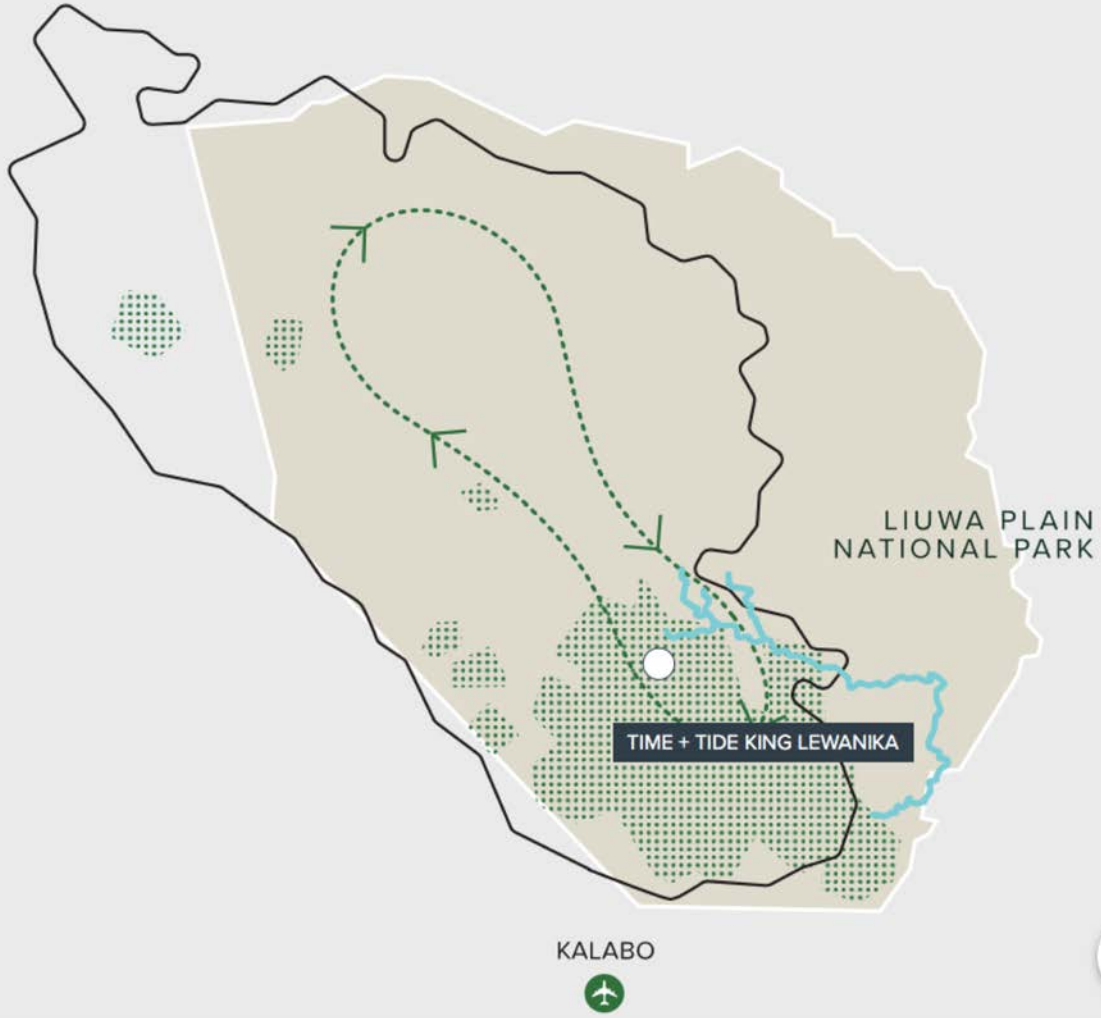


# KEY SPECIES

## Quote

## HIGHLIGHTS

1. Hyena
2. Lion Pride
3. Birdlife



# OUR CAMP

TIME + TIDE KING LEWANIKA

The wildebeest migrate back into the south to start dropping their calves



The floodplains slowly begin to fill, creating a watery wonderland. Great time of year for birdwatching and boating.



# GREAT ALL SEASON

- + Endangered wattled crane sightings
- + Hyena action - see a whole new side to these fascinating creatures
- + Landscape photography - every season offers something different from wildflowers to thunderstorms



With wildebeest abundant around camp, this is a great time to see lions, hyenas and even cheetah and wild dogs hunting



Excellent time of year for photographing dramatic storms + sunsets.



The annual wildflower blooms are at their best in October and November.



The wildebeest begin migrating north, making for great viewing of this iconic experience

## \$1300

PER PERSON, PER NIGHT

- + \$120 per person, per night park and conservation fees
- + Rates include all meals, accommodation, game viewing activities, standard bar drinks, laundry + helicopter transfers

# TIME + TIDE KING LEWANIKA

LIUWA PLAIN NATIONAL PARK



## TIME + TIDE KING LEWANIKA

- + 5 Safari tents en-suite bathroom
- + Opening dates: 15 October – 15 July
- + Transfer time: 15 min heli flight
- + Wifi/connection
- + Solar power













# KEY ACTIVITIES

*A photographer's  
dream destination*

## HIGHLIGHTS

1. Boating | Canoeing Safari
2. Drive + Walking Safari
3. Sleepout under the stars



# ZAMBIA

For decades we have been guides and guardians and the pioneers of conservation based tourism



## HEADING #4

- + List of camp information
- + Villas
- + Opening dates
- + Heli Transfer time from Kalabo
- + Wifi/connection
- + Solar power

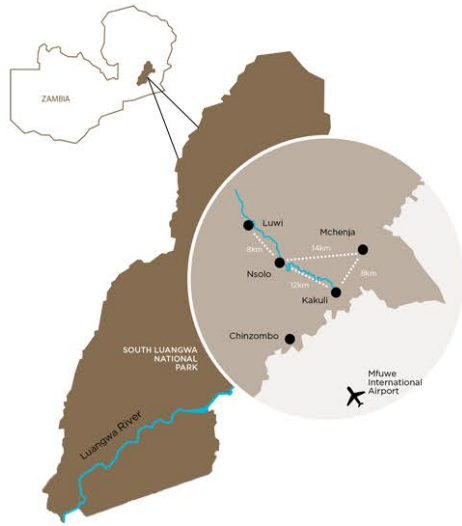






# SOUTH LUANGWA

*Follow in the footsteps  
of conservation pioneer,  
Norman Carr...*



From October to April is the best time of year to see endangered wild dogs.



## GREAT ALL YEAR

- + Epic leopard and lion sightings
- + Iconic river crossings of large breeding herds of elephants
- + Wildlife photography - still a wild land devoid of crowds makes for great photography.

October and November are great for predator action as animals gather at dwindling water.



With the Luangwa River flowing at its highest levels, February and March is the season for boating safaris.



September to November is the best time of year to see the iconic carmine bee-eaters nesting in the dry riverbanks.



With many migrant species flocking to the river, this is an excellent time for birdwatching.

The walking safari season starts in earnest, running from May to mid November.



## KNOWN AS VALLEY OF THE LEOPARD

# TIME + TIDE CHINZOMBO + CAMPS

SOUTH LUANGWA NATIONAL PARK





# KEY HIGHLIGHTS

Listen to a lion calling in the distance and feel every sense awaken, as you open your eyes in one of the wildest places on the planet.

## REGION HIGHLIGHTS

1. Home of walking safaris
2. High density of leopard
3. Best guides in Africa

# ZAMBIA

For decades we have been guides and guardians and the pioneers of conservation based tourism





# KEY ACTIVITIES

## Quote

## HIGHLIGHTS

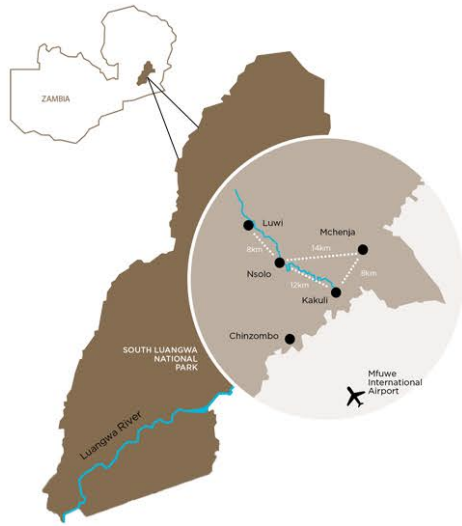
1. Walking Safaris
2. Drive Safaris
3. Signature sleepout – “Bucket List item”





# KEY CLIENTS

- + Modern-day explorers
- + Solo travellers
- + Families
- + Groups of friends
- + First timers to safari
- + Seasoned safari goers



From October to April is the best time of year to see endangered wild dogs.



## GREAT ALL YEAR

- + Epic leopard and lion sightings
- + Iconic river crossings of large breeding herds of elephants
- + Wildlife photography - still a wild land devoid of crowds makes for great photography.

October and November are great for predator action as animals gather at dwindling water.



With the Luangwa River flowing at its highest levels, February and March is the season for boating safaris.



September to November is the best time of year to see the iconic carmine bee-eaters nesting in the dry riverbanks.



With many migrant species flocking to the river, this is an excellent time for birdwatching.

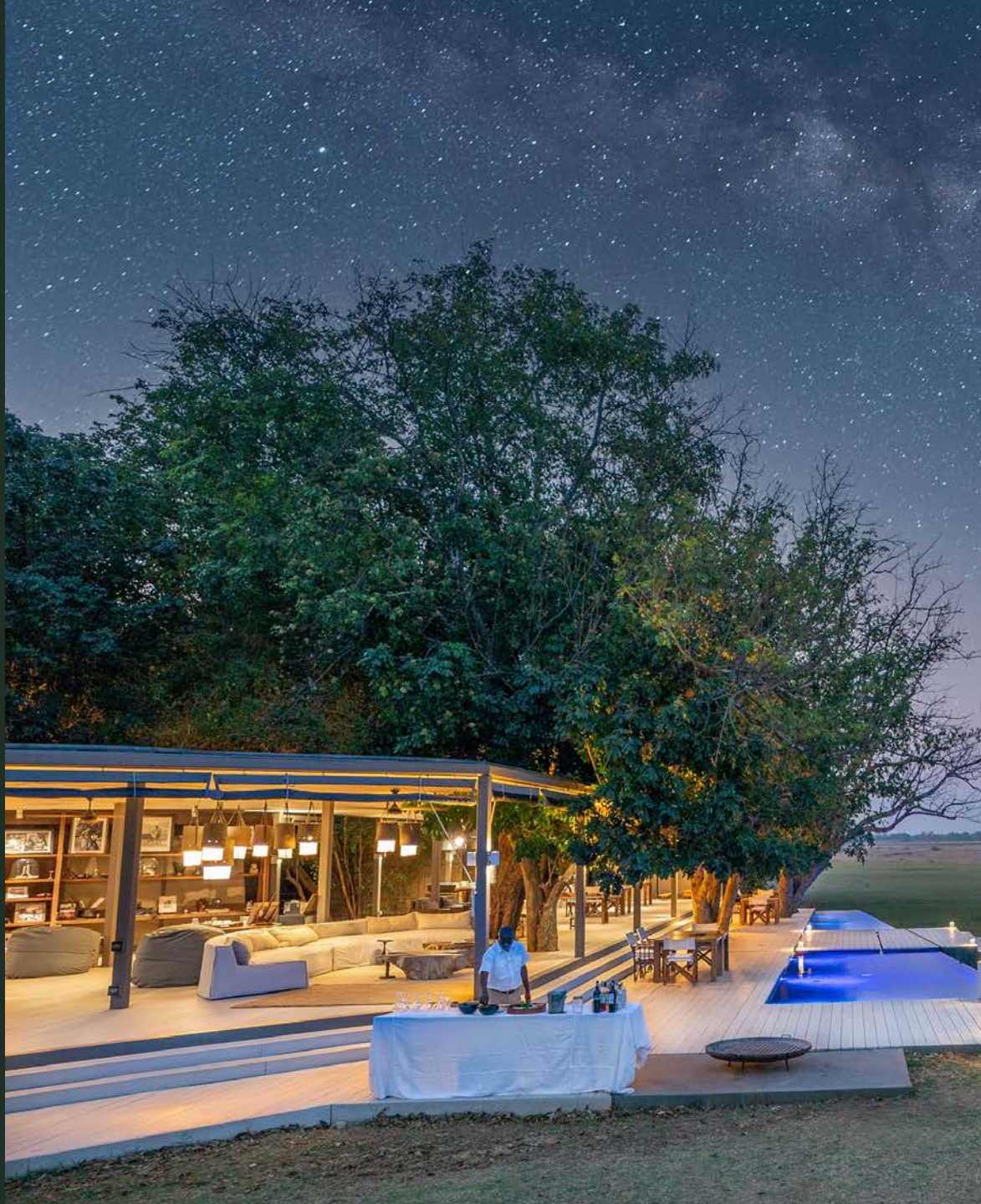
The walking safari season starts in earnest, running from May to mid November.



## KNOWN AS VALLEY OF THE LEOPARD

# TIME + TIDE CHINZOMBO + CAMPS

SOUTH LUANGWA NATIONAL PARK



## TIME + TIDE CHINZOMBO

- + 6 Villas
- + Opening dates
- + Transfer time from airport
- + Wifi/connection
- + Solar power



# LOWER ZAMBEZI

LOWER ZAMBEZI, ZAMBIA



## LOWER ZAMBEZI CAMPS



KEY	
	TIME + TIDE CAMPS
	LOWER ZAMBEZI NATIONAL PARK
	RIVERS
	AIRSTRIP



# OUR CAMPS

1. TIME + TIDE CHONGWE CAMP

+ TENTS

+ SUITES

2. TIME + TIDE CHONGWE HOUSE



## TIME + TIDE CHONGWE CAMP

- + 9 Safari tents with en suit bathrooms
- + Opening dates: 15 April – 15 November
- + Transfer time: 1 hour boat and 20 minute road trip from Jeki
- + Wifi/connection
- + Solar power







## TIME + TIDE CHONGWE SUITES

- + Cassia Suite – one bed one bath
- + Albida Suite – two bed two bath
- + Opening dates: 15 April to 15 November
- + Transfer time: 1 hr boat and 20 min road trip from Jeki
- + Wifi/connection
- + Solar power









## TIME + TIDE CHONGWE HOUSE

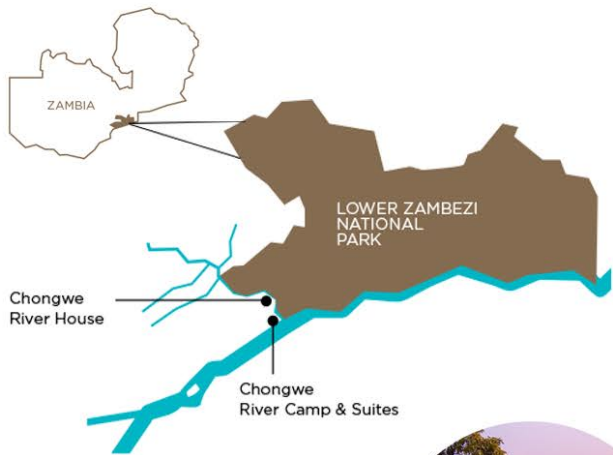
- + Exclusive use house
- + 4 bedroom en suit
- + Opening dates: 15 April to 15 November
- + Transfer time: 1 hr boat and 20 min road trip from Jeki
- + Wifi/connection
- + Solar power











Fishing is good year round, but peaks in October and November during the breeding season.



# GREAT ALL SEASON

- + Elephant encounters - experience the touching, intelligent side of these beautiful creatures
- + Birdwatching - over 370 species
- + Boating and canoeing safaris
- + Wildlife photography



As the summer rains recede, April is the best time to see wild dogs and a high bird diversity.



July to October is peak season for our Sleepout Under the Stars.

Canoeing safaris are great all year. During the driest months of August to November, wildlife congregates along the river.



Lion and leopard sightings pick up as the bush dries out and the visibility improves.



Boat cruises are excellent all year on the Zambezi River - expect plenty of hippos, crocodiles, birds + elephants.



The peak walking safari season is July to October.

# HUGE VARIETY OF ACTIVITIES

ELEPHANT HEAVEN + YOUR HAPPY PLACE

# TIME + TIDE CHONGWE CAMPS

LOWER ZAMBEZI NATIONAL PARK



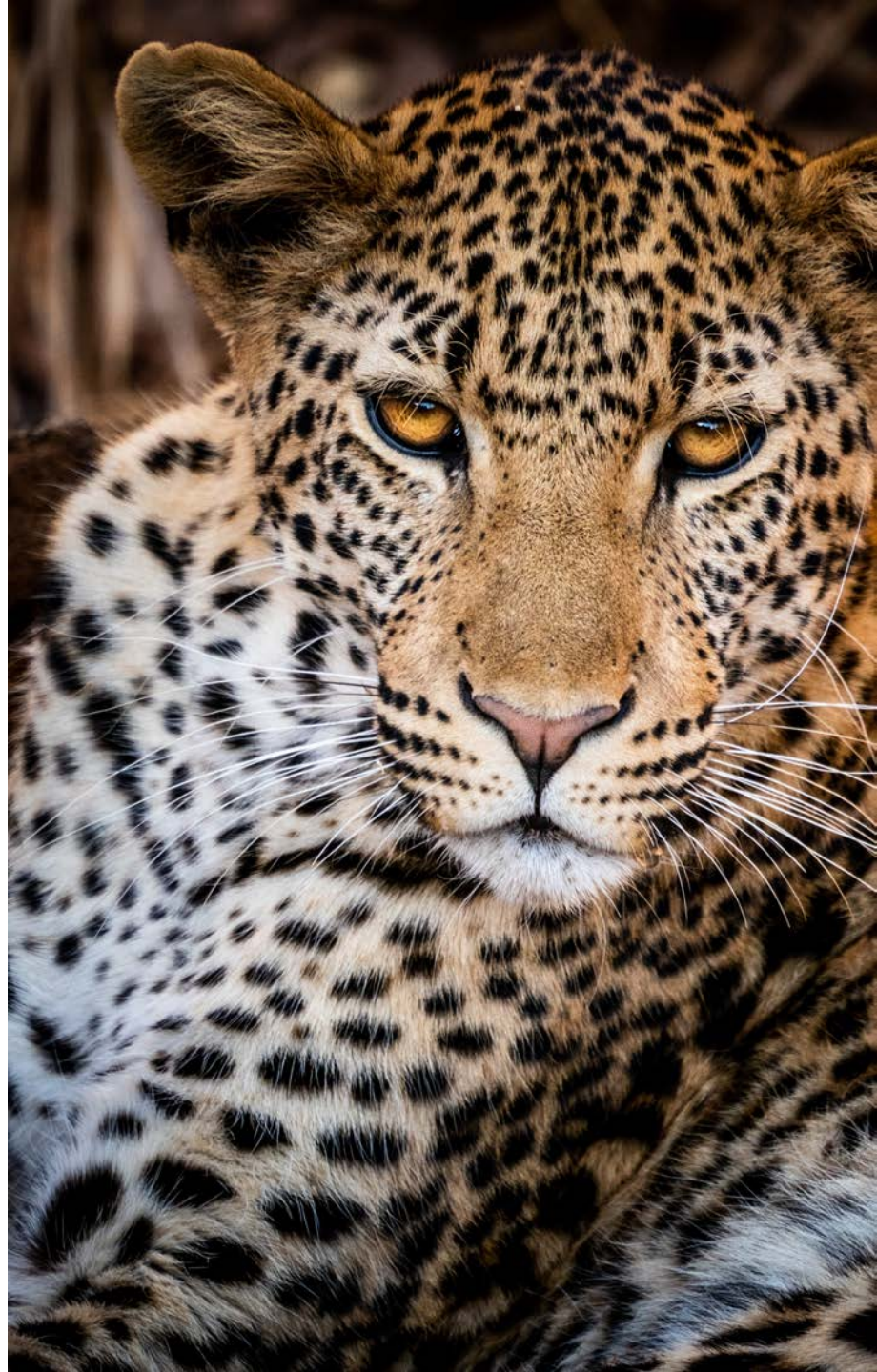
# REGIONAL KEY HIGHLIGHTS

*“Stand in the shadow of a mountain, where giants walk the Earth”.*

## REGION HIGHLIGHTS

1. Huge variety of activities
2. Boating + Canoeing safari on the converse of the Chongwe and the mighty Zambezi Rivers
3. Wildlife experiences watching large wildlife like elephants + leopard to over 370 species of birdlife









# THANK YOU